

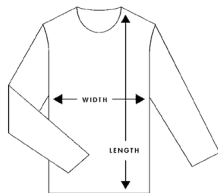
Measurements & Description Chart

HOODIES KIDS

Age 2 – 6 (Zip, Regular)

Size	2	4	6
Body Width (cm)	33	36	39
Body Length (cm)	41	45	50

How We Measure

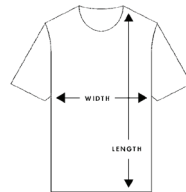


TSHIRTS KIDS

Ages 2 – 6

Size	2	4	6
Body width (cm)	31	34	37
Body Length (cm)	42	46	50

How We Measure



TOTE BAG

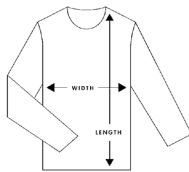
One large main compartment, one internal zipped compartment, one small external compartment, reinforced shoulder straps
Mid weight, 320 GSM
100% cotton canvas
One size 40cm x 48cm x 12cm

HOODIES Youth

Age 8 – 12 (Zip, Regular)

Size	8	10	12
Body width (cm)	42	45	48
Body length (cm)	54	58	61

How We Measure

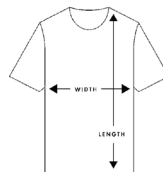


TSHIRTS Youth

Age 8 – 16

Size	8	10	12	14	16
Body width (cm)	39.5	42	44.5	47	49.5
Body length (cm)	54	58	62	66	70

How We Measure



CAP (one size)

www.ascolour.co.nz/hats/caps-hats.html for more style selection

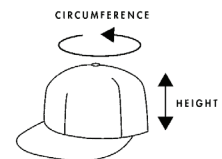
SURF CAP MEASUREMENTS

ONE SIZE

Circumference (cm) 60

Height (cm) 16

How We Measure

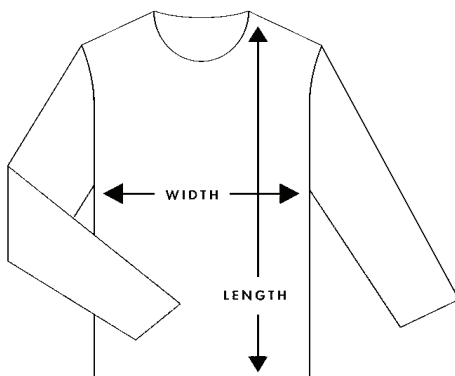


HOODIES Youth & Adult Age 8 plus (Zip, Regular)

STENCIL HOOD MEASUREMENTS

SIZE	XXS	XSM	SML	MED	LRG	XLG	2XL	3XL
Women's Size	{8}	{10}	{12}	{14}	{16}	{18}	{20}	{22}
Body Width (cm)	46	49	52	55	58	61	64	67
Body Length (cm)	67	69.5	72	74.5	77	79.5	82	84.5

How We Measure



ADULT (Polo, Mali, Singlet, Staple Tee)

SUNDAY SINGLET MEASUREMENTS

SIZE	XSM	SML	MED	LRG	XLG
Body Width (cm)	40.5	43	45.5	48	50.5
Body Length (cm)	65	67	69	71	73

MALI TEE MEASUREMENTS

SIZE	XSM	SML	MED	LRG	XLG	2XL
Body Width (cm)	43	45.5	48	50.5	53	55.5
Body Length (cm)	69.5	71	73.5	75.5	77.5	79.5

CHAD POLO MEASUREMENTS

SIZE	SML	MED	LRG	XLG	2XL	3XL
Body Width (cm)	47	50.5	54	57.5	61	64.5
Body Length (cm)	74	76	78	80	82	84

STAPLE TEE MEASUREMENTS

SIZE	SML	MED	LRG	XLG	2XL	3XL
Body Width (cm)	47	52	56.5	61	64	68
Body Length (cm)	71	75	78.5	82	83.5	85